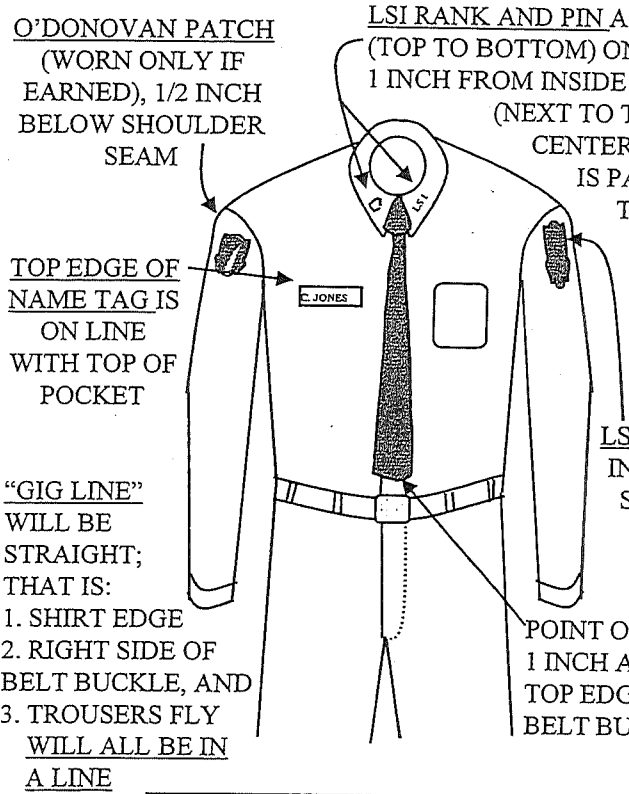
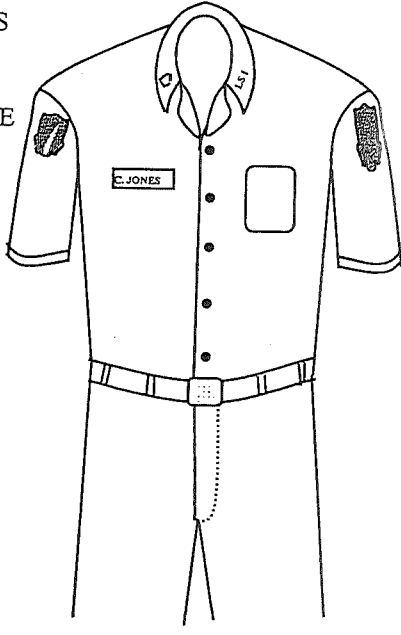


**Figure 1: LSI Jacket**



**Figure 2: Winter Uniform (Long or Short Sleeve Shirt)**



**Figure 3: Summer Uniform (Short Sleeve Shirt)**

THE SUMMER UNIFORM IS THE SHORT SLEEVE SHIRT WITHOUT TIE. PATCHES, COLLAR INSIGNIA, AND NAME TAG PLACEMENT REMAIN THE SAME AS ON THE WINTER UNIFORM SHIRT. *DATES FOR WEARING THIS UNIFORM WILL BE ANNOUNCED.*